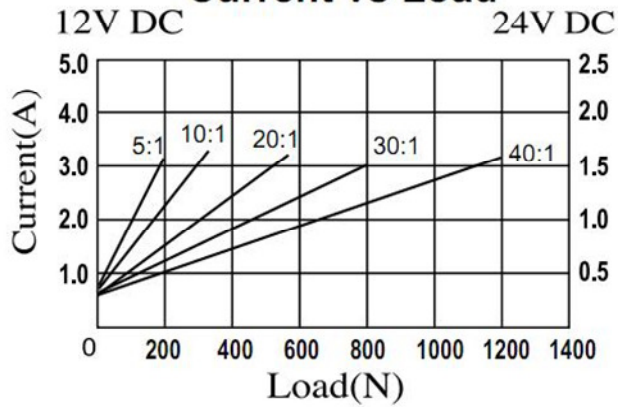
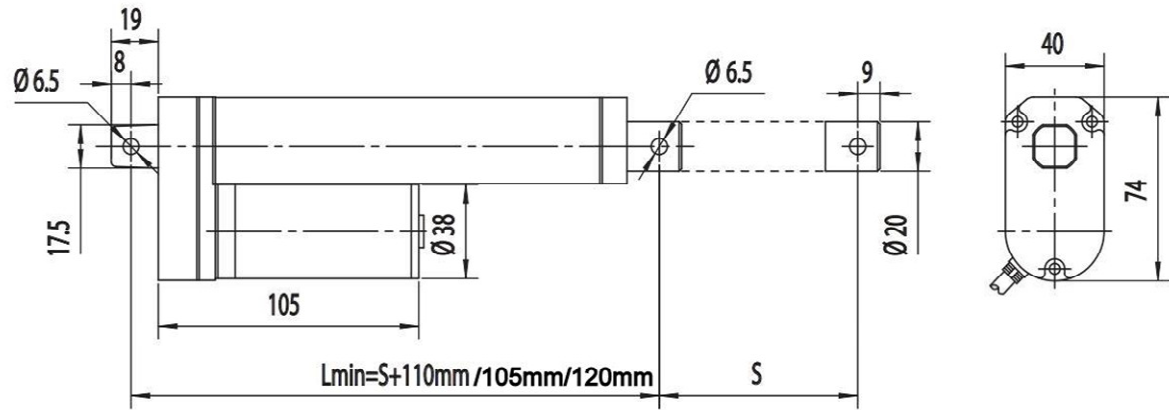
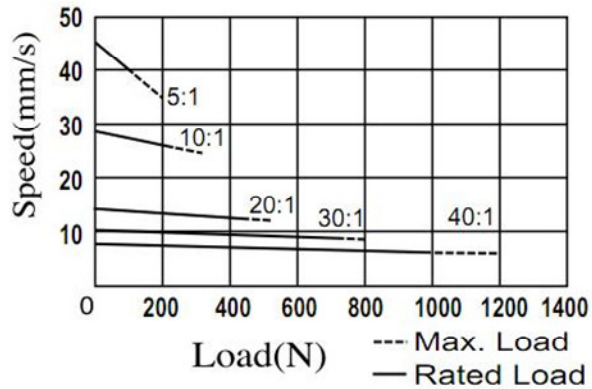


REVISIONS			
REV	DESCRIPTION	DATE	APPROVED

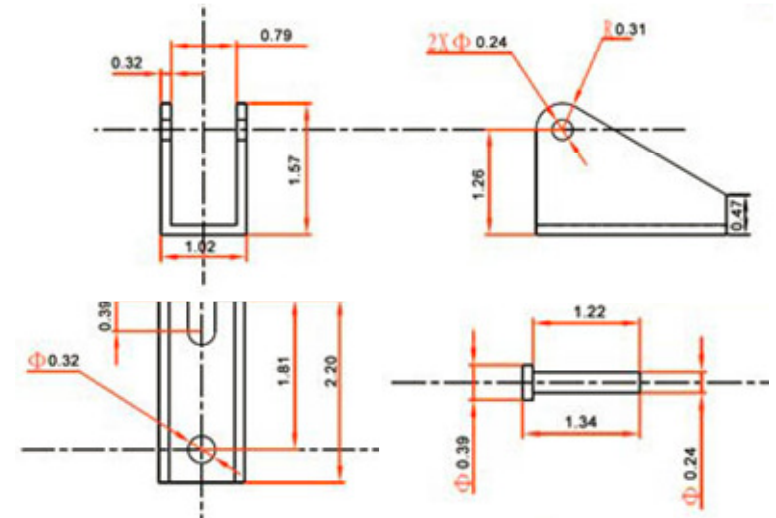
### Current vs Load



### Speed vs Load



Mounting Bracket (measurement in inch)

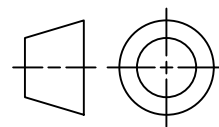


### ACTUATOR SPECIFICATION

Nominal Power	
Nominal Voltage	12VDC/24VDC
Stroke Length (S)	100 - 1000mm
Rated Current	2A- 4A
Max Load	100N – 900N
Duty Cycle	25%
Retracted Length (A)	105mm+Stroke Length
Extended Length (B)	A+Stroke Length
Protection	IP54/IP65

### WIRING SPECIFICATION

RED	Motor +
BLACK	Motor -



### LAA-35105 Linear Actuator

iNOVA Microsystems Pte Ltd  
 #06-30, NorthStar @ AMK  
 7030 Ang Mo Kio Ave  
 Singapore 569880  
 Email: sales@inovamicro.com  
 Tel: (65)65703826 Fax: (65)68264171



DRAWN	Sunny	SIZE	FSCM NO	DWG NO
March 2015		A4		
SCALE				SHEET 1 OF 2

